

**Any Town USA Facility**  
**123 Main Street**  
**Any Town USA, IL 12345**

Revised: <b>1/4/2024</b>
-----------------------------

Any Town USA Facility manufactures and stores widgets. The facility is located on the banks of the American River in Any Town USA Industrial Park. A quarter mile to the north is a subdivision and to the east about a half of a mile is Interstate A. The facility operates from 8:30AM to 4:30PM every Monday through Friday. There are approximately 50 employees on site during operating hours.

Latitude: 41.5299      Longitude: -88.0806

**24 HOUR ON-SITE CONTACT:**

Susan Smith

Work: 123.444.5553  
Cell: 123.555.6668  
Email: [ssmith@facility.com](mailto:ssmith@facility.com)

**EMERGENCY COORDINATOR:**

Joe Smith

Work: 123.444.5555  
Cell: 123.555.6666  
Email: [smith@facility.com](mailto:smith@facility.com)

**ALTERNATE EMERGENCY COORDINATOR:**

Sally Anderson

Work: 123.444.5554  
Cell: 123.555.7777  
Email: [anderson@facility.com](mailto:anderson@facility.com)

**Plan Point of Contact:**

George Duke

Work: 123.444.5556  
Cell: 123.555.7778  
Email: [duke@facility.com](mailto:duke@facility.com)

**EXTREMELY HAZARDOUS SUBSTANCE:**

Sulfuric Acid – 1,234 lbs in forklift batteries  
Ammonia (anhydrous) – 123 lbs in tank  
Chlorine 4-150 lb cylinders pig tailed

**TRANSPORTATION ROUTES:**

All extremely hazardous substances come in via roadway: Interstate A to County Road 114 South, to Main Street North, to the facility which is located on the left.

**FACILITY MAP:**

A facility map showing the location of all EHS chemicals is attached at the conclusion of this plan.

**OFF-SITE MAP:**

Off-site map attached showing a 1.8 mile radius as the facility’s worse case scenario.

**INDUSTRIAL NEIGHBOR(S):**

ABC Construction .....	000.000.0000
ABC Mechanical .....	000.000.0000 ext 1
ABC Industries .....	000.000.0000
ABC Warehouse .....	000.000.0000
ABC Heating and Cooling .....	000.000.0000
ABC Products.....	000.000.0000
ABC Home Improvements.....	000.000.0000

**SPECIAL CONCERNS:**

Any Town High School .....	000.000.0000
Any Town Nursing Home .....	000.000.0000 ext 0000
Any Township Day Care Center .....	000.000.0000
Any Town Subdivision .....	000.000.0000

**EMERGENCY EQUIPMENT:**

The facility has a variety of emergency response equipment. This includes:

- Spill boom and pads
- 10 Fire extinguishers
- 4 First Aid Kits
- 2 AEDs
- 3 Eyewash and 2 safety shower stations
- Personal protective equipment (4 chemical aprons, gloves, goggles, boots, respirators)
- Sorbent, shovels, tarps, etc.
- 5 Acid Spill Containment Kits

**METHODS AND PROCEDURES FOLLOWED BY THE FACILITY IN THE EVENT OF A RELEASE:**

Employees will assess situation and don the appropriate PPE to contain any spill using absorbant mats located within the spill kits and work to eliminate the leak source. Spilled sulfuric acid will be neutralized and collected for proper disposal.

If the spill cannot be readily contained by employees, local fire and police services will be contacted for assistance along with triggering the General Response Team for support and leadership. Emergency cleanup services will be provided by ABC Environmental at 000-000-0000.

If there is a release of ammonia or chlorine, all facility personnel will evacuate the building and 911 will be called. If the primary assembly area is impacted by the release, facility personnel will assemble uphill and upwind from the incident. A wind sock is present on all four corners of the building to determine wind direction in the event of a release.

**PROCEDURES PROVIDING RELIABLE, EFFECTIVE AND TIMELY NOTIFICATION IN A RELEASE:**

**(must include the ones listed below and any others your facility uses)**

Any Town Fire .....	9-1-1 or 000.000.0000
Any Town Police.....	9-1-1 or 000.000.0000
Will County Local Emergency Planning Committee.....	815.740.0911
Illinois State Emergency Response Commission.....	800.782.7860
National Response Center .....	800.424.8802

**METHODS OF DETERMINING A RELEASE:**

- Sulfuric Acid: a leak will be determined through visual observations of either the floor (residue) or battery housing. Daily walkthroughs are completed by management. Pre- and post-inspections of forklifts are completed on each shift.
- Anhydrous Ammonia: a leak will be determine through daily walk arounds / visual observations of the tank and piping and regular inspections. An ammonia detection system is also in use in all rooms of the facility. This system will automatically notify 911 and sound an audible alarm when an increased amount of ammonia is detected.
- Chlorine: a leak will be determine through daily walk arounds / visual observations of the tank and piping and regular inspections. There is a low level alarm in place on the chlorine system that will sound an audible alarm when the level drops below a certain pressure.

**TRAINING:**

Forklift operators and mechanics are licensed and trained on an annual basis in the safe operation of their equipment. Part of this training includes safe battery handling and HAZMAT containment actions in case of a spill.

**EVACUATION:**

The evacuation map is located at the conclusion of this plan.

In the event of an evacuation, all personnel and visitors would exit through the nearest exit and assemble in the primary designated assembly area in the southwest corner of the parking lot. If the primary assembly area is impacted by the release, personnel will assemble uphill and upwind from the incident. A wind sock is present on all four corners of the building to determine wind direction in the event of a release. Once present, the managers will take accountability for the personnel in their teams. Visitors will be accounted for by using the visitor's sign-in log that the receptionist will grab on her way out of the building.

**TESTING AND UPDATING PLAN:**

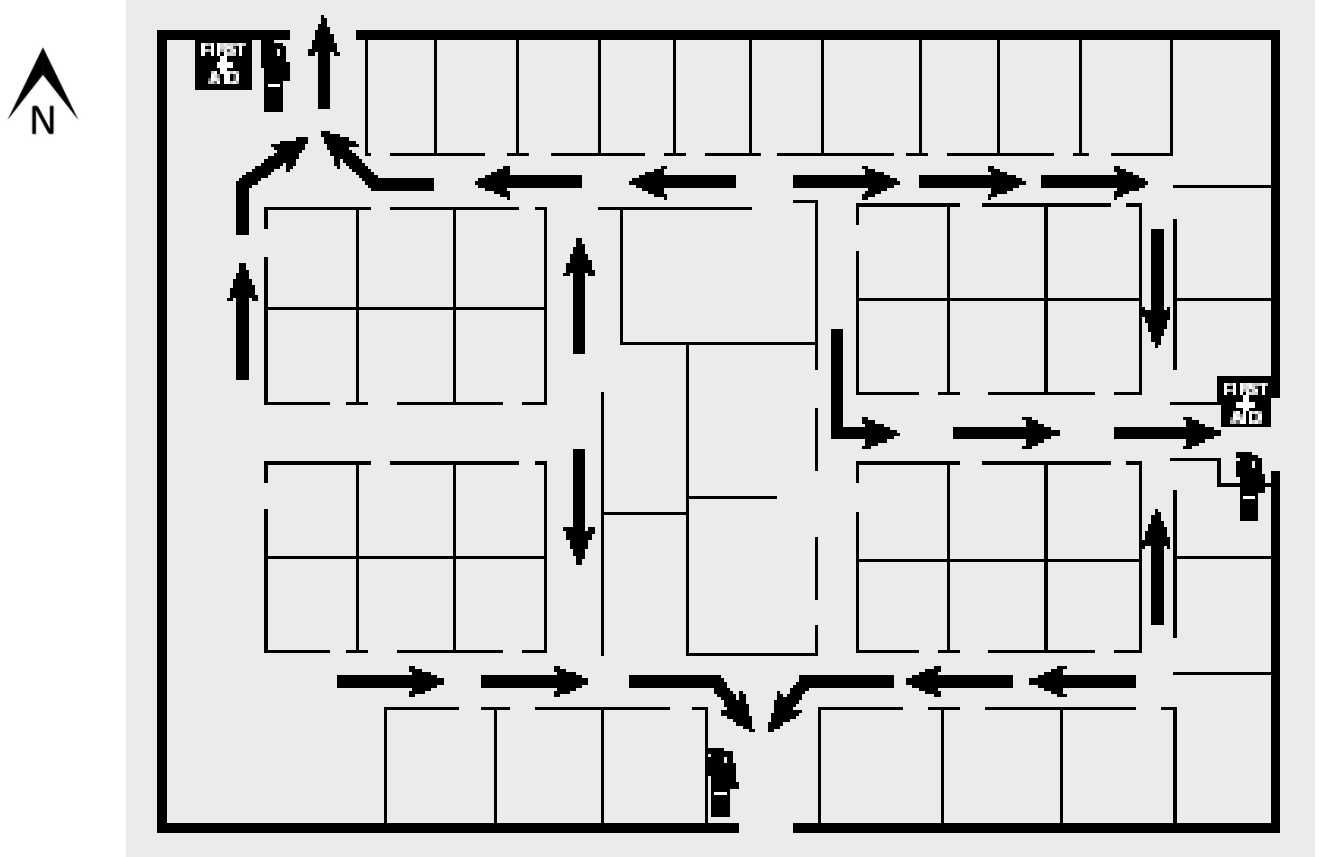
This Chemical Emergency Preparedness plan will be reviewed and tested on an annual basis as part of the site's Defense and Emergency Plan. The plan will be updated yearly for any needed revisions or additions.

The facility conducts spill containment drills quarterly and evacuation drills annually.

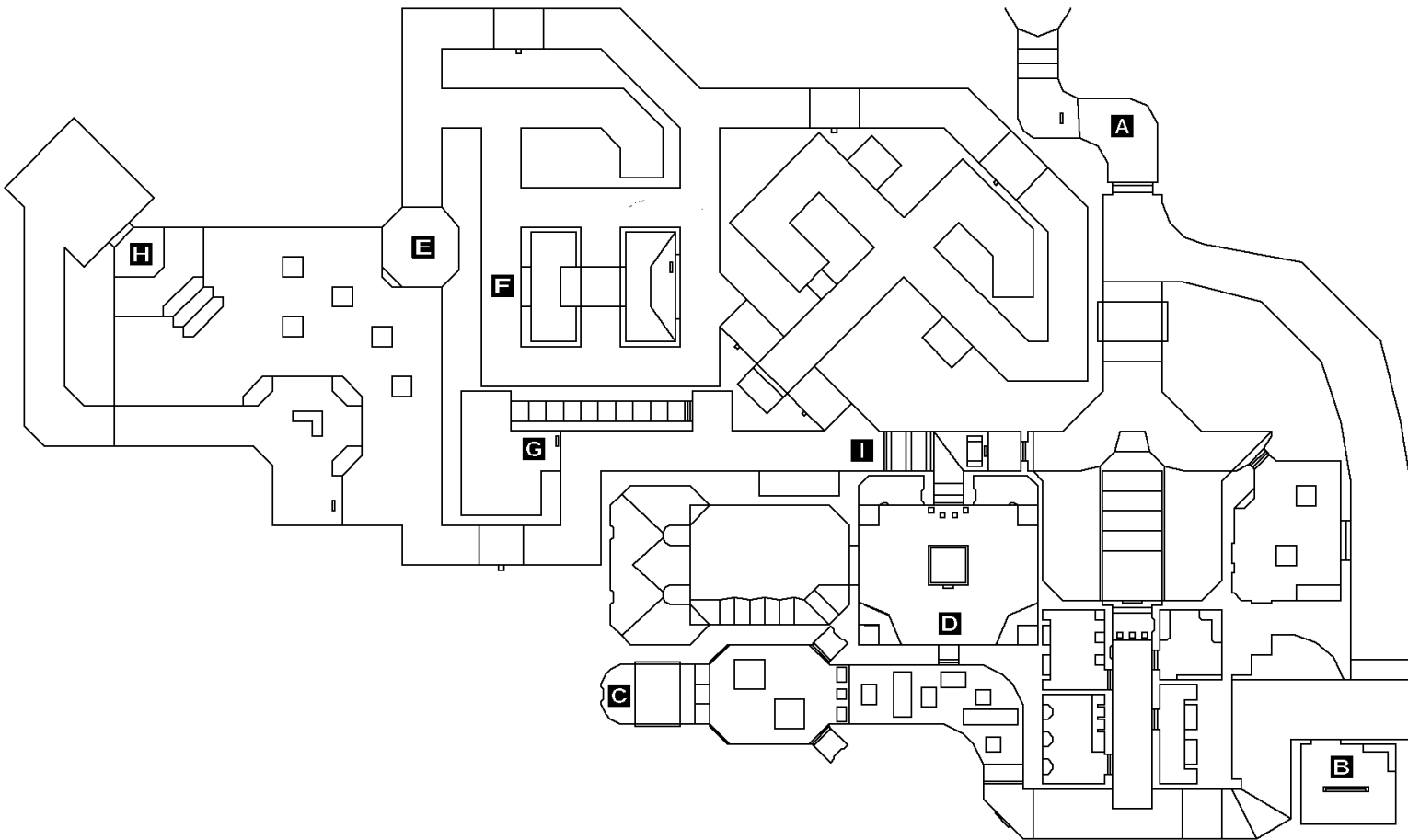
**SUMMARY OF CHANGES:**

Revision Date	Revision Description	Name of Reviewer	Reviewer's Position
8/15/2023	Updated primary Alternate Emergency Coordinator contact information, industrial neighbors, and neighbors of special concern. Various quantities updated throughout emergency equipment. Clarified the emergency evacuation procedures to include muster locations and accountability procedures.	George Duke	Technological Hazards Planner
1/4/2024	Reviewed plan; no changes necessary.	George Duke	Technological Hazards Planner

**EVACUATION MAP**



**FACILITY MAP INDICATING EHS CHEMICALS**



**A – B – C – D: SULFURIC ACID**  
**E – F – G – I: ANYDROUS AMMONIA**  
**H: CHLORINE**

OFF-SITE WORSE CASE SCENAIIO MAP

