

Any Town USA Facility
123 Main Street
Any Town USA, IL 12345

Revised:
CURRENT DATE

Any Town USA Facility manufactures and stores widgets. The facility is located on the banks of the American River in Any Town USA Industrial Park. A quarter mile to the north is a subdivision and to the east about a half of a mile is Interstate A. The facility operates from 8:30AM to 4:30PM every Monday through Friday. There are approximately 50 employees on site during operating hours.

Latitude: 41.5299 Longitude: -88.0806

24 HOUR ON-SITE CONTACT:

Susan Smith

Work: 123.444.5553

Cell: 123.555.6668

Email: ssmith@facility.com

EMERGENCY COORDINATOR:

Joe Smith

Work: 123.444.5555

Cell: 123.555.6666

Email: smith@facility.com

ALTERNATE EMERGENCY COORDINATOR:

Sally Anderson

Work: 123.444.5554

Cell: 123.555.7777

Email: anderson@facility.com

EXTREMELY HAZARDOUS SUBSTANCE:

Sulfuric Acid – 1,234 lbs

Ammonia (anhydrous) – 123 lbs

Chlorine 4-150 lb cylinders pig tailed

TRANSPORTATION ROUTES:

All extremely hazardous substances come in via roadway: Interstate A to County Road 114 South, to Main Street North, to the facility which is located on the left.

FACILITY MAP:

A facility map showing the location of all EHS chemicals is attached at the conclusion of this plan.

OFF-SITE MAP:

Off-site map attached showing a 1 mile radius as the facility's worse case scenario.

INDUSTRIAL NEIGHBOR(S):

ABC Construction	000.000.0000
ABC Mechanical	000.000.0000 ext 1
ABC Industries	000.000.0000
ABC Warehouse	000.000.0000
ABC Heating and Cooling	000.000.0000
ABC Products.....	000.000.0000
ABC Home Improvements.....	000.000.0000

SPECIAL CONCERNS:

Any Town High School	000.000.0000
Any Town Nursing Home	000.000.0000 ext 0000
Any Township Day Care Center	000.000.0000
Any Town Subdivision	000.000.0000

EMERGENCY EQUIPMENT:

The facility has a variety of emergency response equipment. This includes:

- Spill boom and pads
- 10 Fire extinguishers
- 4 First Aid Kits
- 2 AEDs
- 3 Eyewash and 2 safety shower stations
- Personal protective equipment (4 chemical aprons, gloves, goggles, boots, respirators)
- Sorbent, shovels, tarps, etc.
- 5 Acid Spill Containment Kits

METHODS AND PROCEDURES FOLLOWED BY THE FACILITY IN THE EVENT OF A RELEASE:

Employees will assess situation and don the appropriate PPE to contain any spill using absorbant mats located within the spill kits and work to eliminate the leak source. Spilled sulfuric acid will be neutralized and collected for proper disposal.

If the spill cannot be readily contained by employees, local fire and police services will be contacted for assistance along with triggering the General Response Team for support and leadership. Emergency cleanup services will be provided by ABC Environmental at 000-000-0000.

If there is a release of ammonia or chlorine, all facility personnel will evacuate the building and 911 will be called. If the primary assembly area is impacted by the release, facility personnel will assemble uphill and upwind from the incident. A wind sock is present on all four corners of the building to determine wind direction in the event of a release.

PROCEDURES PROVIDING RELIABLE, EFFECTIVE AND TIMELY NOTIFICATION IN A RELEASE:

(must include the ones listed below and any others your facility uses)

Any Town Fire	9-1-1 or 000.000.0000
Any Town Police.....	9-1-1 or 000.000.0000
Will County Local Emergency Planning Committee.....	815.740.0911
Illinois State Emergency Response Commission.....	800.782.7860
National Response Center	800.424.8802

METHODS OF DETERMINING A RELEASE:

- Sulfuric Acid: a leak will be determined through visual observations of either the floor (residue) or battery housing. Daily walkthroughs are completed by management. Pre- and post-inspections of forklifts are completed on each shift.
- Anhydrous Ammonia: a leak will be determine through daily walk arounds / visual observations of the tank and piping and regular inspections. An ammonia detection system is also in use in all rooms of the facility. This system will automatically notify 911 and sound an audible alarm when an increased amount of ammonia is detected.
- Chlorine: a leak will be determine through daily walk arounds / visual observations of the tank and piping and regular inspections. There is a low level alarm in place on the

chlorine system that will sound an audible alarm when the level drops below a certain pressure.

TRAINING:

Forklift operators and mechanics are licensed and trained on an annual basis in the safe operation of their equipment. Part of this training includes safe battery handling and HAZMAT containment actions in case of a spill.

EVACUATION:

The evacuation map is located at the conclusion of this plan.

In the event of an evacuation, all personnel and visitors would exit through the nearest exit and assemble in the primary designated assembly area in the southwest corner of the parking lot. If the primary assembly area is impacted by the release, personnel will assemble uphill and upwind from the incident. A wind sock is present on all four corners of the building to determine wind direction in the event of a release. Once present, the managers will take accountability for the personnel in their teams. Visitors will be accounted for by using the visitor's sign-in log that the receptionist will grab on her way out of the building.

TESTING AND UPDATING PLAN:

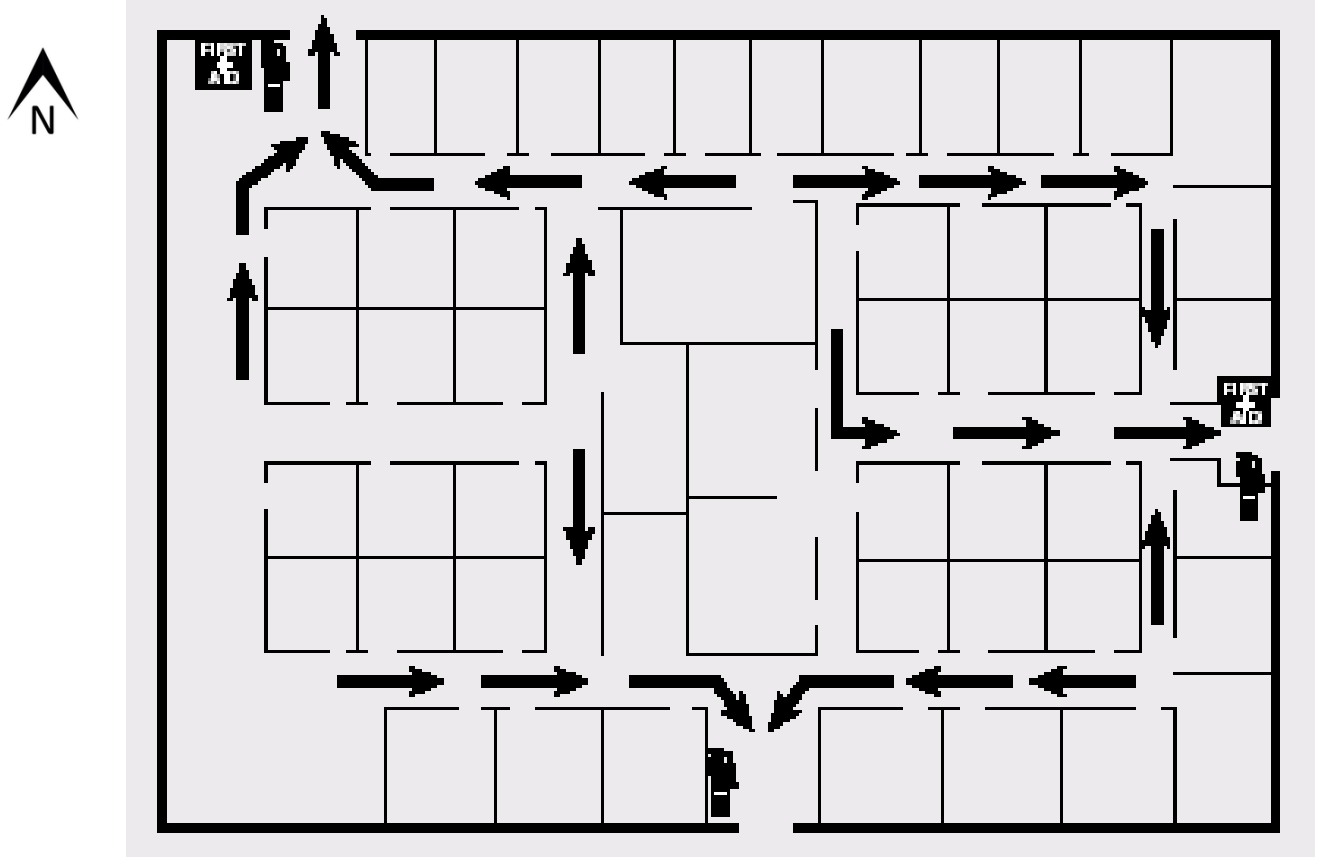
This Chemical Emergency Preparedness plan will be reviewed and tested on an annual basis as part of the site's Defense and Emergency Plan. The plan will be updated yearly for any needed revisions or additions.

The facility conducts spill containment drills quarterly and evacuation drills annually.

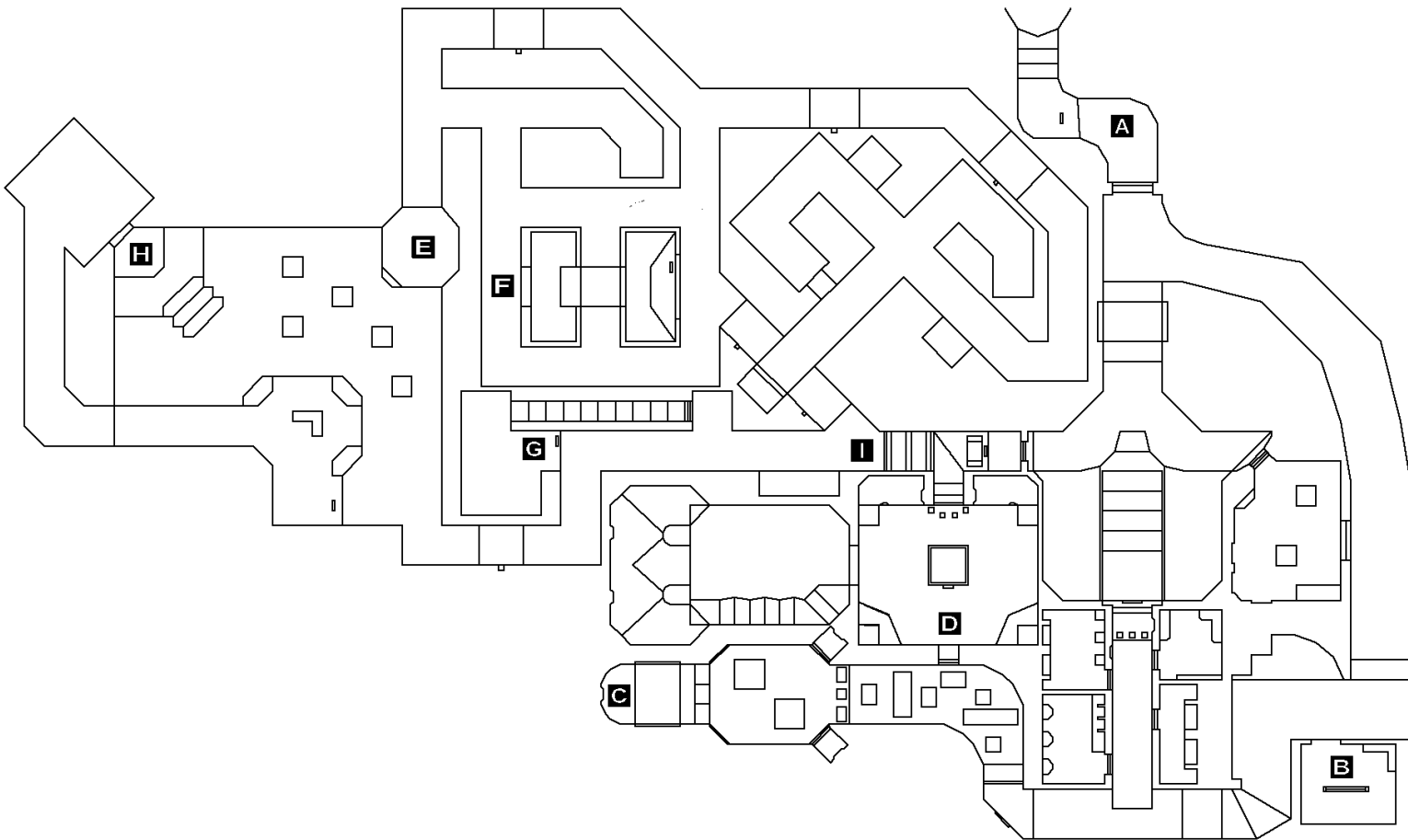
SUMMARY OF CHANGES:

Revision Date	Revision Description	Name of Reviewer	Reviewer's Position
8/15/2021	Updated primary Alternate Emergency Coordinator contact information, industrial neighbors, and neighbors of special concern. Various quantities updated throughout emergency equipment. Clarified the emergency evacuation procedures to include muster locations and accountability procedures.	Kathryn Fajfar	Technological Hazards Planner
8/15/2022	Reviewed plan; no changes necessary.	Kathryn Fajfar	Technological Hazards Planner

EVACUATION MAP



FACILITY MAP INDICATING EHS CHEMICALS



A – B – C – D: SULFURIC ACID
E – F – G – I: ANYDROUS AMMONIA
H: CHLORINE

OFF-SITE WORSE CASE SCENAIIO MAP

